

# BTI

*Engineering Movement.  
Powering Industry.*

*TURNTABLES for  
Vehicle Access*



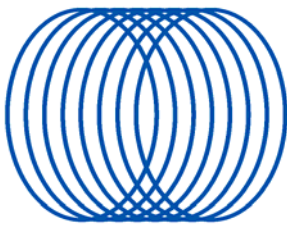
**Client:** Kyle Stewart for Kingston upon Thames Crown Court

**Synopsis:** British Turntable designed and installed a client specification turntable to allow a secured vehicle to drive into, and out of, an enclosed area with the minimum space requirement.

This installation is of the air film type for shallow design which allows the turntable to be located within a suspended floor. The revolve is supplied complete with the compressor and large air storage receiver and all controls and inter connections are secured against attack by vandals.

The pneumatic drive ensures the unit can be operated in the event of electric power failure and an emergency rotation facility is incorporated in the unlikely event of drive failure.

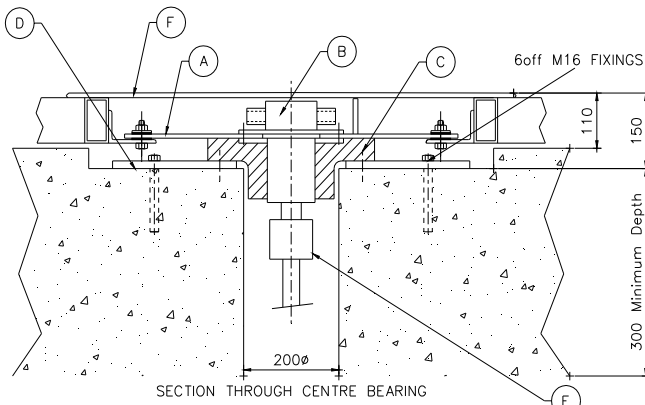
British Turntable has installed vehicle access turntables at a number of Crown Courts, including Cardiff and Croydon, where speed of access and security have been principal factors.



# BTI

Engineering Movement.  
Powering Industry.

## TURNTABLE SPECIFICATION



ITEM No	DESCRIPTION
A	CONNECTING PLATE
B	MANIFOLD
C	PIVOT BEARING
D	CENTRE PLATE
E	ROTARY UNION
F	M.S. DECKING PLATES - 10mm THICK

B.T.C. WORKS	GENERAL TOLERANCE : +/- - mm
ALL DIMENSIONS ARE IN MILLIMETRES(mm) UNLESS OTHERWISE STATED	
THIS DRAWING IS THE SOLE COPYRIGHT OF THE BRITISH TURNTABLE COMPANY LIMITED (B.T.C.) & CANNOT BE COPIED IN PART OR IN WHOLE WITHOUT PRIOR WRITTEN PERMISSION OF B.T.C. LIMITED. PROTECTED BY DESIGN RIGHT	
TITLE:- CENTRE DETAIL OF A 5 Metres DIAMETER 2.5 Tonnes CAPACITY AIR FILM TURNTABLE	
3rd ANGLE PROJECTION	BRITISH TURNTABLE Co.LTD EMBLEM STREET BOLTON, LANCs ENGLAND. BL3 5BW TEL No.(01204) 525626
DRAWN	IW DATE JAN. 2000
CHECKED	-
APP'VD	- SCALE(A1) N.T.S.
DRAWING No. -	ISSUE -

**Construction:** Steel box section construction with raised pattern floor plate steel deck.

**Diameter:** 9 metre

**Capacity:** 24 tonnes

**Pit Depth:** 110mm

**Speed:** Variable, typically 0.66rpm

**Motor:** Pneumatic with edge friction drive.

**Control:** Pneumatic forward and reverse.

**Features:** Optional manual rotation.

Audible rotation warning.

Low air pressure warning.

Operation without electrical supply (except compressor).

Large air reservoir.

Secure controls with control and interconnections between control and turntable protected against vandal attack.

