



*Engineering Movement.
Powering Industry.*

TURNTABLES for Vehicle Access



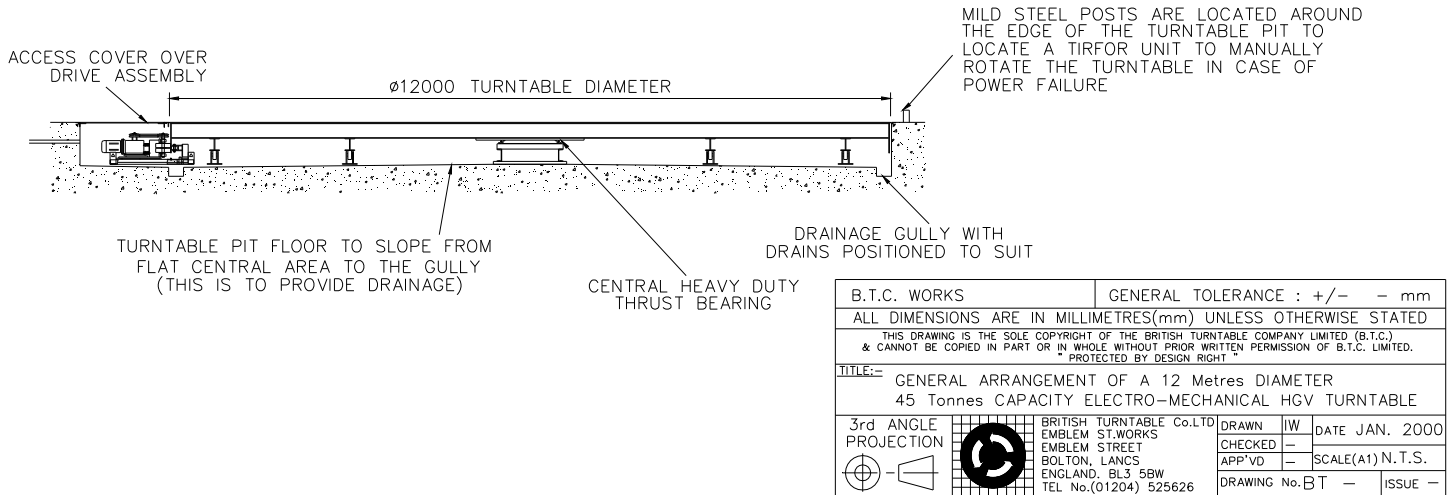
Client: Marks & Spencer, Chester, England

Synopsis: British Turntable Company designed and installed a heavy goods vehicle turntable for a new Marks & Spencers Store at its prime city centre location in Chester.

In this instance the site was affected by a number of constraints including the need for safe public access, size restriction of the loading bay and the prohibition of reversing into or from the adjacent street.

The turntable is used for all deliveries and is also fitted with safety barriers as the loading bay is used by the public for collection of goods. Installation of the turntable allowed the company to maximise the in-store sales area and to unload delivery vehicles quickly and safely.

TURNTABLE SPECIFICATION



Construction: All steel construction, perimeter wheel support design

Diameter: 12 metre **Capacity:** 45 tonnes

Height: Nominal 650mm **Speed:** 2/3 rpm

Motor: Synchronous, 3ph, 5kW

Control: Forward and reverse with vehicle overhang protected spring loaded safety bump stops

Drive: Edge friction drive with emergency manual facility

Features: External weatherproof control with security key only access. All steelwork zinc metal sprayed and sealed for corrosion protection. Raised pattern steel, non-slip, deck. Pit floor sloped to drainage point.